
Downloading the Event Capture Log from a MiMOMax radio

Description

This application note details the process of downloading the Event Capture Log from a MiMOMax radio.

The Event Capture Log is a CSV (comma separated values) file that contains samples of signal quality and signal constellation information, on a symbol-by-symbol basis for 500ms leading up to an event, causing radio link re-establishment. This information is extremely useful in diagnosing RF related issues. The radio is able to record high resolution data for 24 events. Old events are overwritten with new ones once more than 24 events have occurred.

Logging into CCMS

MiMOMax radios have a built in web configuration package called CCMS (Configuration, Control and Monitoring System). To access the CCMS, point a web browser to the radio's IP address (see Figure 1). MiMOMax radios are often preconfigured with an IP address specified by the customer when the radio is ordered. If no IP address has been assigned, the default is 192.168.0.1 for Tx-high radios and 192.168.0.2 for Tx-low radios.

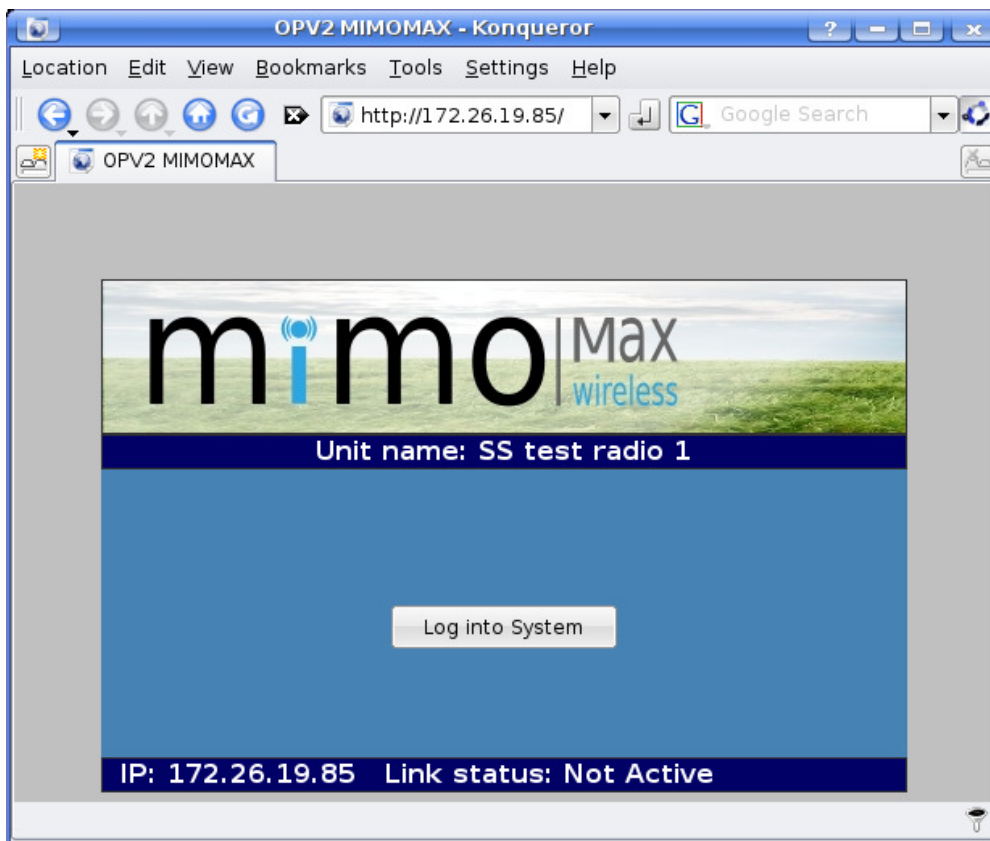


Figure 1: MiMOMax logon

To logon to the radio, press the “log into System” button. MiMOMax radios have two levels of access (user and tech). Select the tech level of access. MiMOMax radios have the following default login credentials:

Username	Default password
user	user
tech	tech

Figure 2: Default login credentials

Downloading the Event Capture Log

Click on “Diagnostics” on the left hand side menu and then click on “Event Captures” (see Figure 3). This page will display the current configuration settings of the Event Capture Log. Configurable items are:

- Constellation capture (on / off)
- Constellation capture trigger (Retrain, CRC error, Retrains and CRC errors)

Constellation capture triggering on Retrains will be enabled by default.

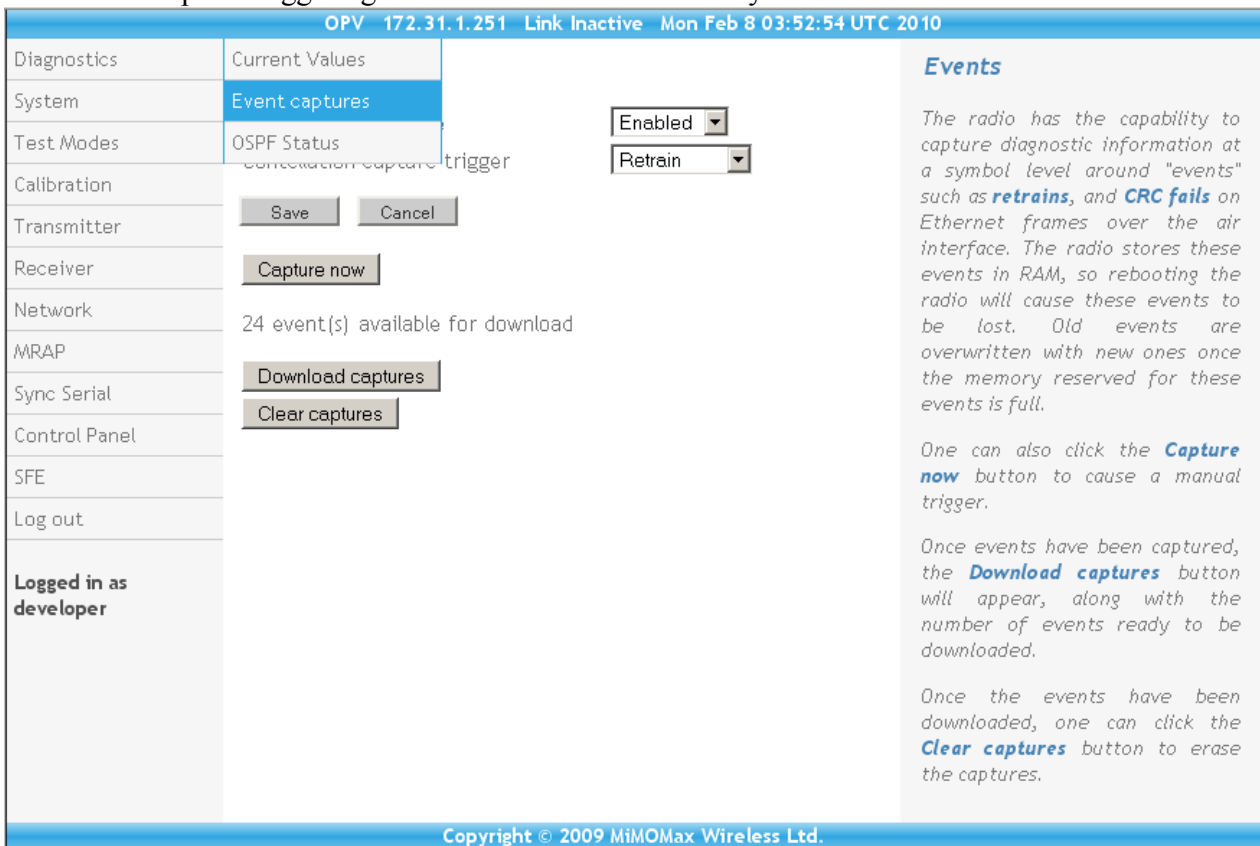


Figure 3: CCMS Event Capture page

Once events have been recorded, the page will display the number of events that are ready for download, as well as buttons to download and clear the event memory.

To download the Event Capture Log, click on “Download captures”. Once the file has been downloaded, please attach to an email, and forward to the MiMOMax Team for analysis.