
Downloading the Data Log from a MiMOMax radio

Description

This application note details the process of downloading a data log from a MiMOMax radio.

The Data Log is a CSV (comma separated values) file that contains samples from various systems in the radio. The values are sampled every 60 seconds. The log stores the past 48 hours worth of data and is useful when diagnosing issues.

Logging into CCMS

MiMOMax radios use a built in web configuration package called CCMS. To access the CCMS, point a web browser to the radio's IP address (see Figure 1). MiMOMax radios are often preconfigured with an IP address specified by the customer when the radio is ordered. If no IP address has been assigned, the default is 192.168.0.1 for Tx-high radios and 192.168.0.2 for Tx-low radios.

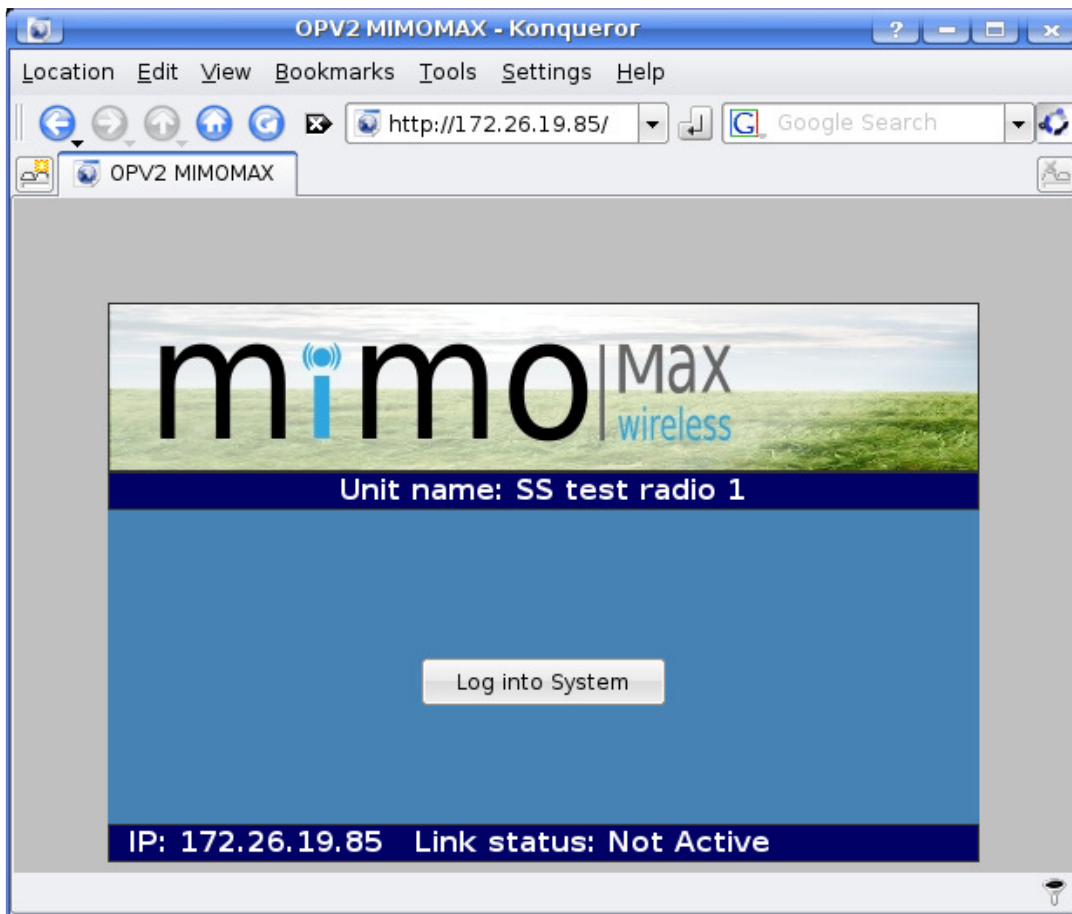


Figure 1: MiMOMax logon

To logon to the radio, press the “log into System” button. MiMOMax radios have two levels of access (user and tech). The default login credentials are:

Username	Default password
user	user
tech	tech

Figure 2: Default login credentials

Downloading the Data Log

Click on “Control Panel” on the left hand side menu and then click on “Data log”, see Figure 3. The file will then be downloaded and the Web Browser will prompt for it to be saved or opened. Select Save and save the file onto your computer.

Once the file has been downloaded, please attach to an email and email back to MiMOMax for analysis.

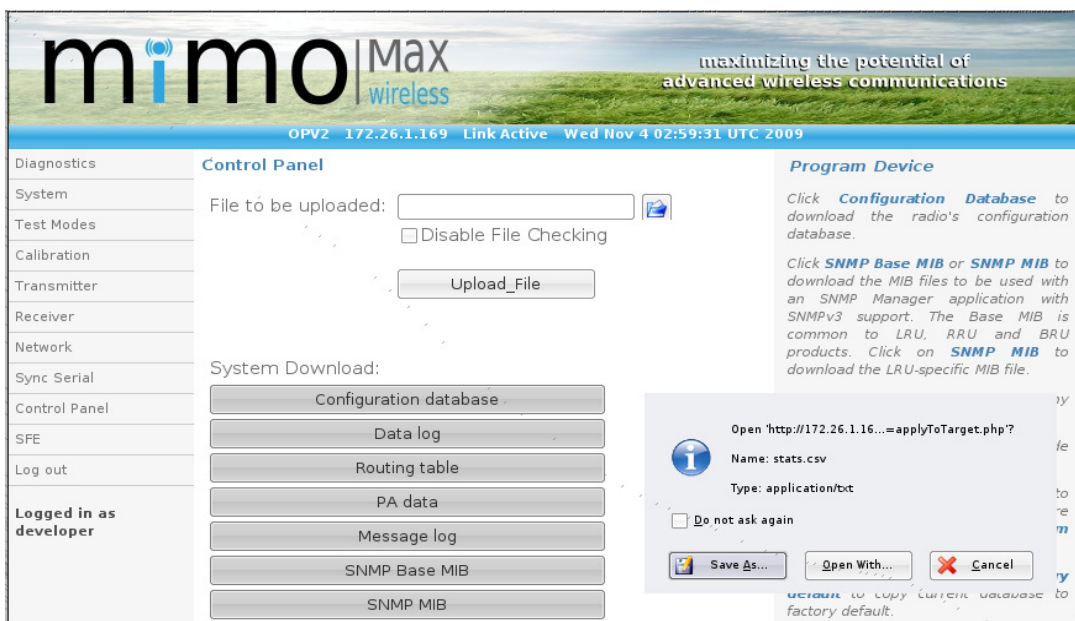


Figure 3: CCMS Control Panel