



TN-1430-AN

# MiMOMax Linking in TaitNet P25 Conventional Networks

TN-1430-AN  
Application Note version 1.0  
March 2009

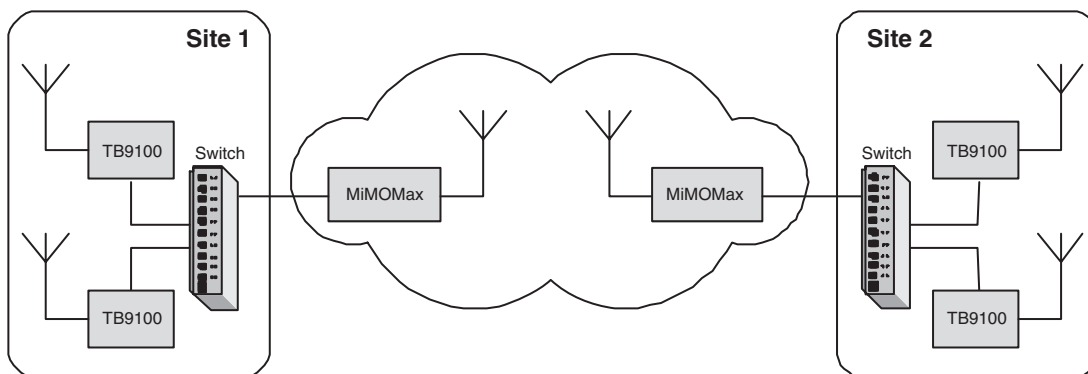
This application note provides guidelines on using P25 conventional systems (including Simulcast) with MiMOMax links.

This application note is intended for Network Designers and System Integrators.

## 1 Overview

The MiMOMax NDL links operate as Ethernet bridging devices (layer 2), enabling low latency IP connectivity between any pairs of points within a P25 backhaul network. Each link provides a user data rate of up to 265 kbps within a 25 kHz, 420 to 470 MHz channel, over distances up to 60 kms or more. Note that the NDL links can also be configured as a layer 3 router if required.

The following diagram shows a basic setup with the base stations, switches, and MiMOMax link between two sites. The MiMOMax link will work within a TaitNet P25 conventional system like any other link.



## 2 Guidelines for MiMOMax Links

The following guidelines are recommended:

- MiMOMax is suitable for conventional P25 digital systems with up to 4 channels per link.
- MiMOMax links are suitable for Simulcast P25 operation.
- MiMOMax links have not yet been fully tested on trunked channels, and their use is not recommended for this application at this stage.
- Where there is a high volume of broadcast or multicast traffic on the network that is not required to be passed over the link, it is recommended that routers are installed at the link ends to prevent this traffic from consuming bandwidth.

- Normal care needs to be taken with site RF design to ensure that receivers are not overloaded, or interfered with, by other adjacent transmitters.

For further information and specific application details, contact:

MiMOMax Wireless Ltd  
175 Roydvale Ave  
PO Box 1645  
Christchurch  
New Zealand

E-mail: [mimomax.com](mailto:mimomax.com)

## 3 Publication Information

### Compliance Issues

None

### CSO Instruction

CSOs please inform registered Systems Integrators and Network Designers that this document is available.

### Issuing Authority

Issued by: Kurt Ebrecht  
Technical Publications Manager

### Confidentiality

Confidential - This message or document contains proprietary information intended only for the person(s) or organisation(s) to whom it is addressed. All Recipients are legally obliged to not disclose Tait technological or business information to any persons or organisations without the written permission of Tait.

### Distribution Level

System Integrators, Network Designers and Tait Only

## Document History

Publication Date	Author
March 2009	G Smith, SJ Glubb

## 4 Tait Contact Information

### Corporate Head Office New Zealand

Tait Electronics Ltd, P.O. Box 1645, Christchurch, New Zealand  
E-mail (Marketing): [taitnet@taitworld.com](mailto:taitnet@taitworld.com)  
E-mail (Sales): [sales@taitworld.com](mailto:sales@taitworld.com)

### Technical Support

Technical Support Manager  
Tait Electronics Ltd, P.O. Box 1645, Christchurch, New Zealand  
E-mail: [support@taitworld.com](mailto:support@taitworld.com)

### Internet

<http://www.taitworld.com>