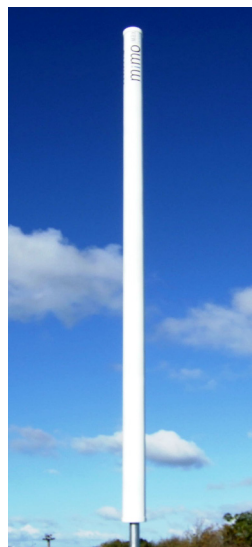


Omni-Directional MiMO Antenna

The Omni Directional Antenna provides an approximate gain of 10dBi and possesses a physically non-intrusive, vertical structure. The Omni is designed for Point to Multi-Point Master (BRU) Base Station solutions, specifically, the MiMOMax Multipoint Digital Link (MDL), where Omni Directional (360 degree) radiation is required. Unique to, and like all, MiMOMax’s antennas, the Omni has both horizontal and vertical radiation patterns.

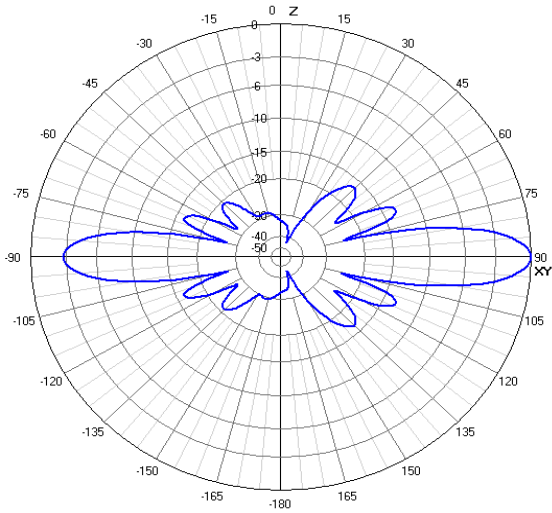


Preliminary Specifications

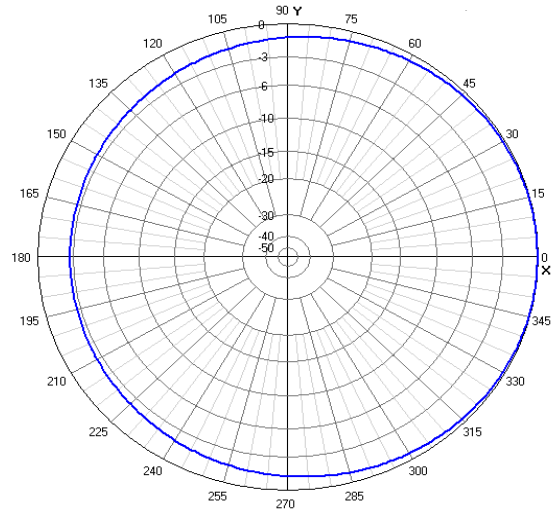
Omni Directional MiMO Antenna	
Frequency Range	420-470MHz*
Polarisation	Horizontal and Vertical with separate feeds
Antenna Gain	10 dBi Nominal
Beam width	12° (Vertical Polarisation) 14° (Horizontal Polarisation)
Frequency bandwidth (15dB return loss)	30MHz
Connector arrangement	2 x Male Type n connector on 1.5m tail of RG213 coaxial cable
Max Gust Wind speed	160kph
Wind loading	100kph 217N & 160kph 555N
Mounting	50mm dia. X 600mm mounting pipe
Number required per link end	1 for 2 receiver MIMO 2 for 4 Receiver MIMO

* 30MHz ranges in this band yet to be specified

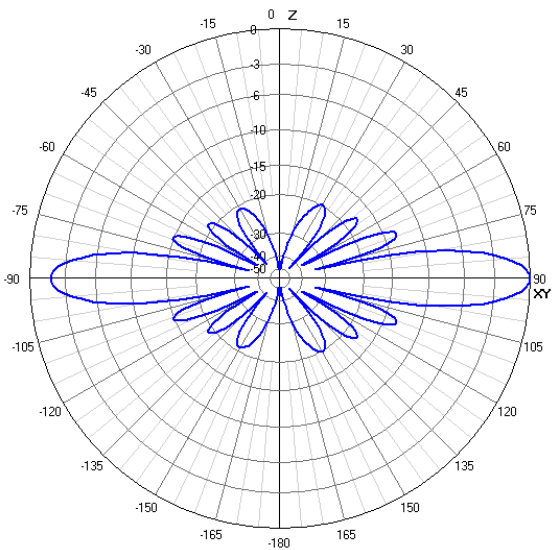
Omni-directional MiMO Antenna Radiation Patterns



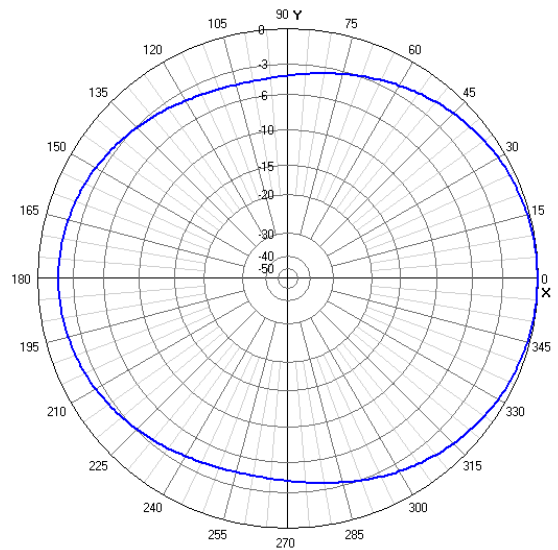
Vertical Polarization -
Vertical Plane



Vertical Polarization -
Horizontal Plane



Horizontal Polarization -
Vertical Plane



Horizontal Polarization -
Horizontal Plane